

**Application Note: Alarm Monitoring Programming**

Solidyne's Alarm Monitoring service is provided in conjunction with Notifact Remote Alarm Monitoring Services (<http://www.notifact.com>). This service allows a Solidyne control system with M202A & Modem (or equivalent) to dial into the Notifact Alarm Delivery System and utilize their web driven alarm delivery mechanisms. The mechanisms include alarm delivery via email, fax, or even an automated voice phone call describing the job site and alarm that has occurred.

After registering for the service, you will need to contact Solidyne for an ID number which will correlate to your job site that you will be utilizing of the alarm monitoring service. This 4 digit ID number will need to be registered/added to your account by logging into the Alarm Monitoring Service via the Solidyne website and clicking the Install New Device tab. Enter the 4 digit ID number and click Submit.

After the new device has been entered, you will next be prompted to enter certain details about the job site (street address, city, state...etc).

Once this is complete, clicking the View/Edit Devices tab will show you all of your sites that are currently registered. Clicking any of the sites will take you to its configuration screens. There are 3 setup options to choose, Device Info, Message Delivery and Message History.

The Device Info configuration screen will display the unit's location, contact information and device ID number. The Message Delivery configuration screen will display the 50 alarms that can be generated by the system. More info further in this document about this area. The third selection is Message History which will display all of the alarms that have been triggered by this device ID for the past 90 days.

**Message Delivery**

When a device is first install/added to your account, there will be 50 pre-numbered alarms available. These alarms will need to have deliveries associated to them. For example, you may want each alarm to be sent to your email address. To do this, click the Add button for any of the alarms under the Add Delivery Method column in the Message Delivery configuration screen. At the top of this window, there are 3 selections:

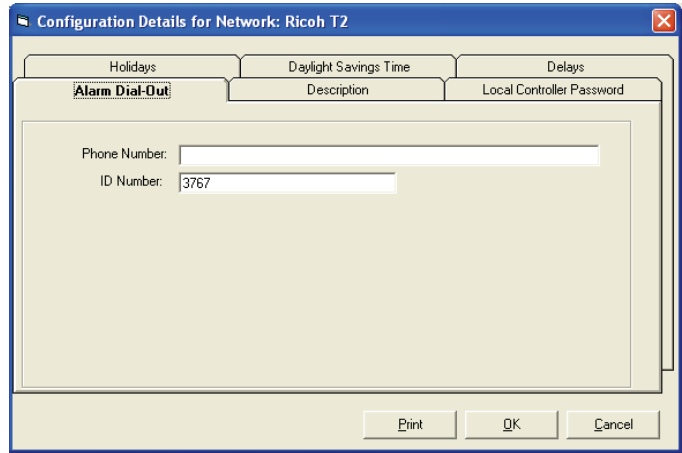
- Add delivery method for Message Alarm \*\* only
- Add delivery method to all messages...
- Add delivery method to all devices

If you would just like to add a new delivery for the alarm you selected, then select the first item "Add delivery method for Message Alarm \*\* only". If you would like to add a new delivery method to ALL of your alarm message deliveries, select "Add delivery method to all messages...". If you have more than one Device ID, selecting "Add delivery method to all devices" will create a new delivery method in all of your registered Devices.

**ICMS Dial Up Configuration Setup**

Once your control system is up and running and the M202A & Modem (or equivalent) is installed, you can then start writing the Alarm Dial Outs that will dial into the Alarm Monitoring Service.

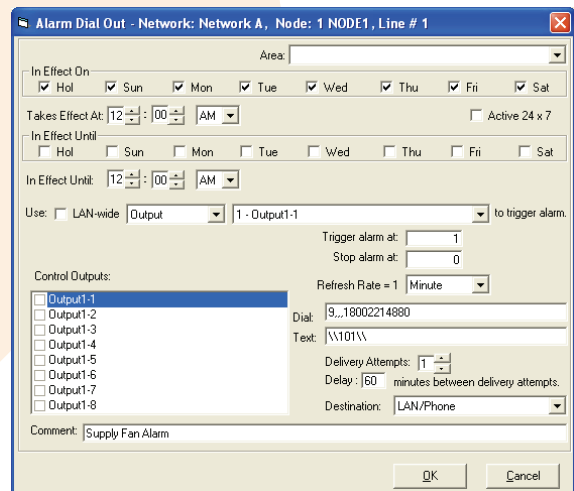
The 4 digit Device ID will need to be entered into the network's Network ID field located in the ICMS Network Configuration window under the Alarm Dial Out tab as shown in Figure 1.



**Figure 1**

When an alarm is generated, the alarm message will include the Network ID of the system and this is how the Alarm Monitoring System "knows" which Device ID is calling the system.

The next step is to create the Alarm Dial Out program lines. The lines can be written in any node, no different than they are typically applied. The major difference will be in the Dial and Text fields. The phone number for the Alarm Monitoring System is 800-221-4880. This phone number is entered into the Dial field of the Alarm Dial Out program line. The text field will have the following character string: \\1\*\*\ where the \*\* is the Message ID number from the Message Delivery configuration page. For example, if you wanted to generate message number 01, then the character string would be: \\101\ as shown in Figure 2.



**Figure 2**